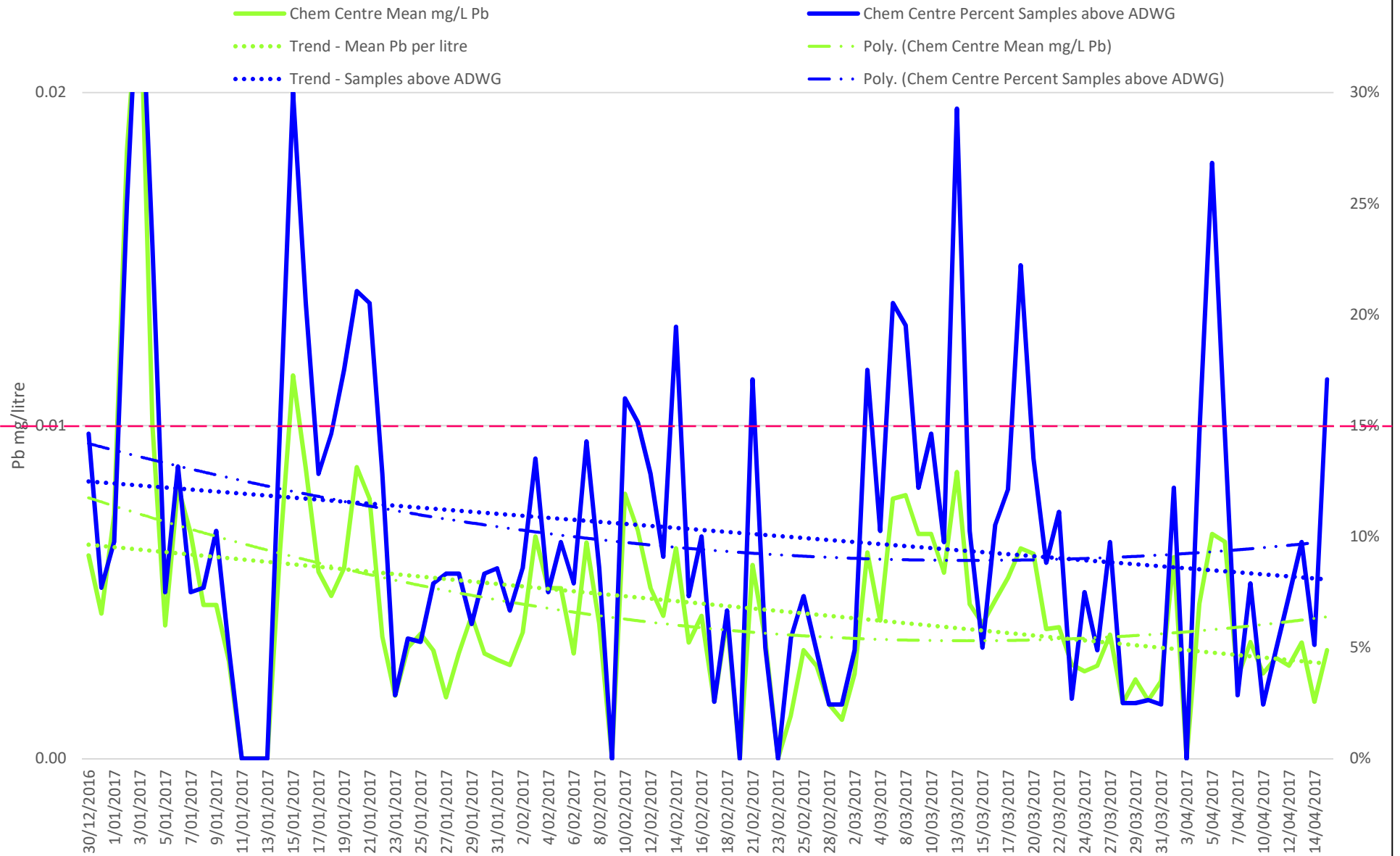
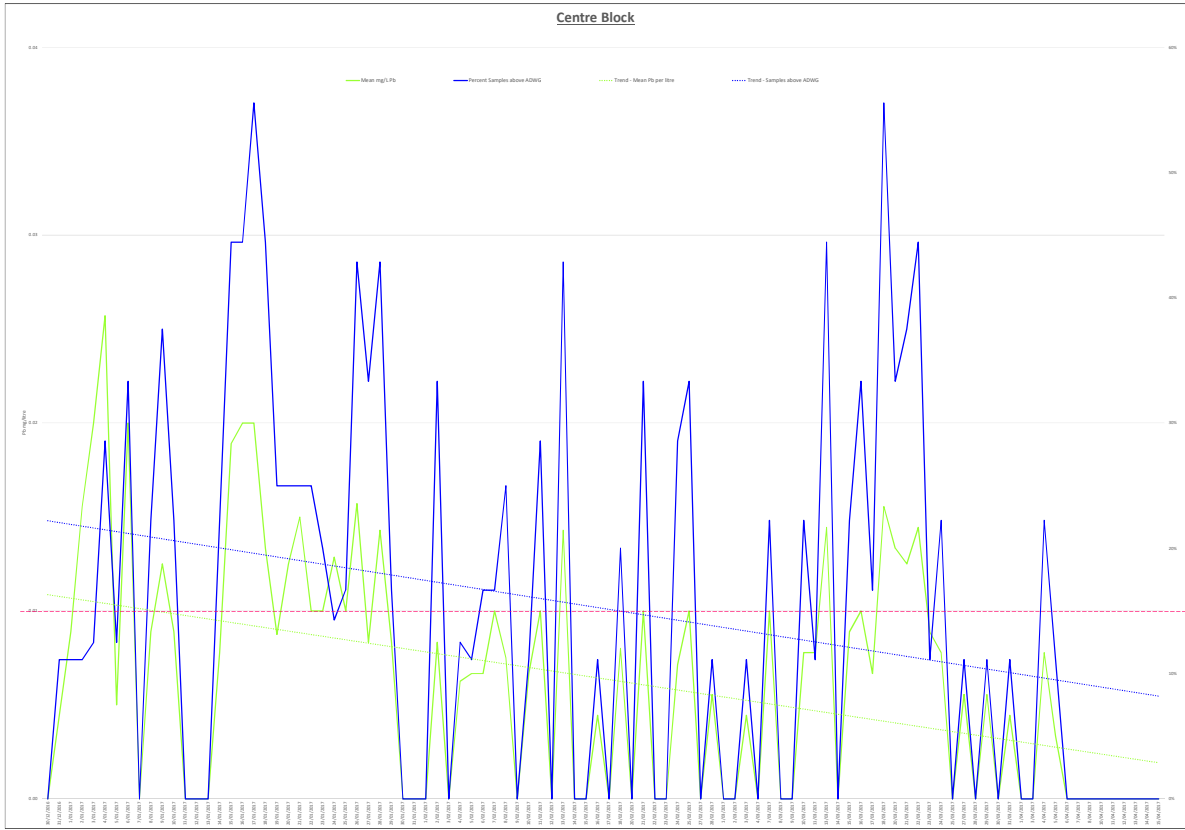
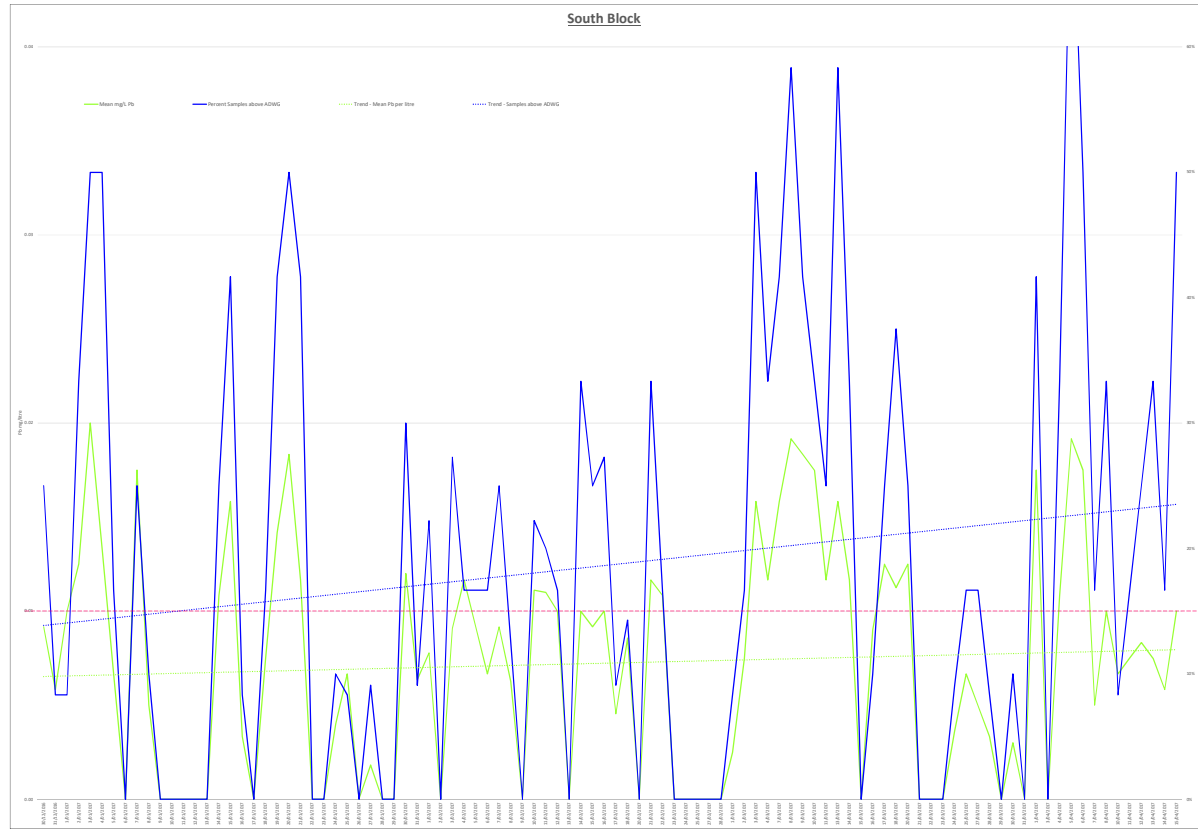


# Chemistry Centre of WA Perth Children's Hospital Water Analysis - All Samples





# Chemistry Centre of WA Perth Children's Hospital Water Analysis

## Accompanying notes

1. Results  $< 0.0005$  (not measurable) are reported as 0
2. Results are reported to 2 significant digits (e.g.  $< 0.015$  shown as 0.01,  $\geq 0.015$  shown as 0.02)
3. The dashed red line on the graphs represents the Australian Drinking Water Guideline of (ADWG) 0.01 mg Pb per litre
4. Results are after a "flush" of approx. 8 litres
5. The solid green line on the graphs shows the average lead content over the total samples
6. The solid blue line on the graph shows the % of samples with lead content above the ADWG
7. The dashed/dotted blue and green lines are trend lines relating to the same coloured solid lines