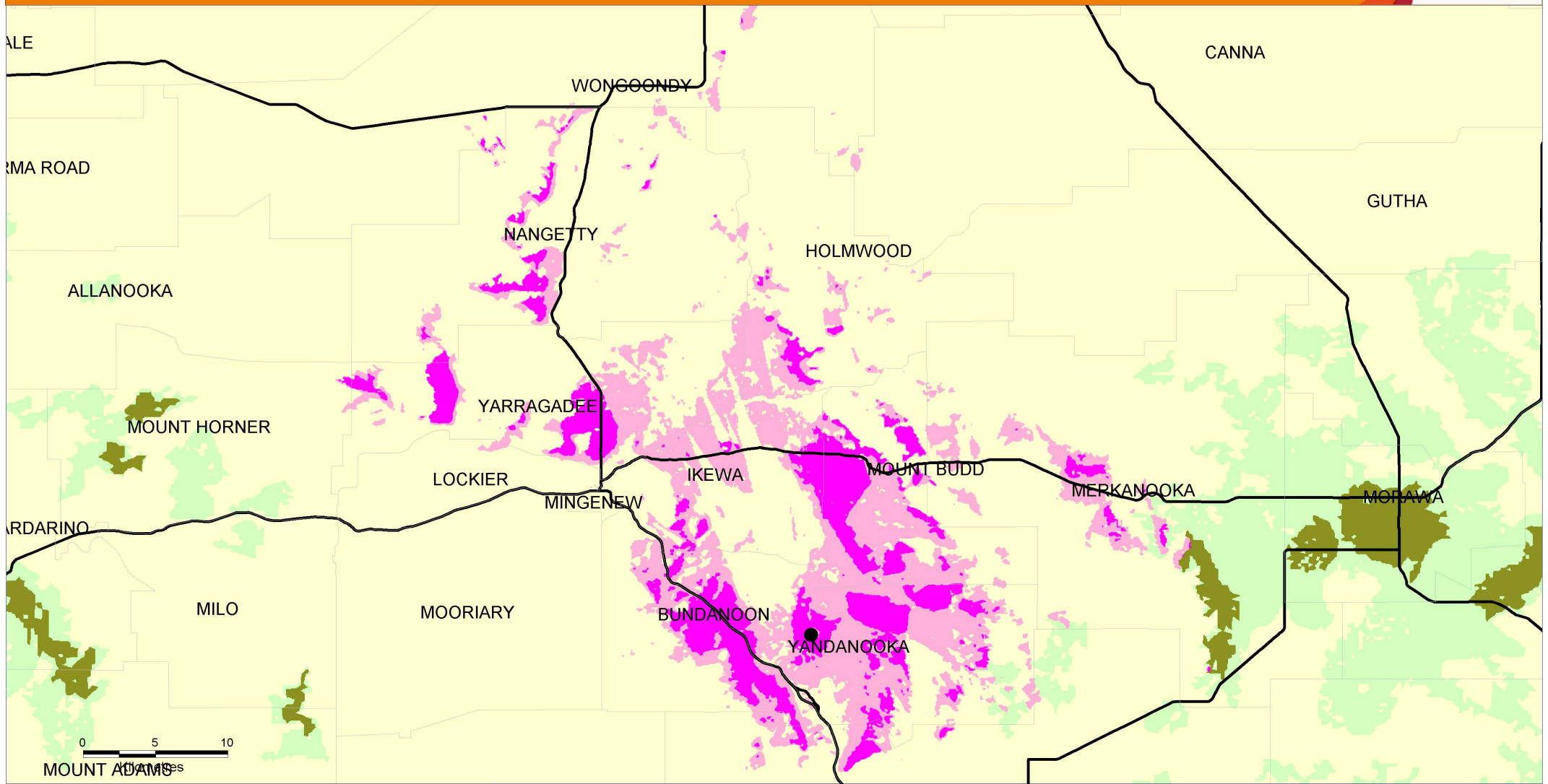


Mobile Black Spot Program Network Coverage - MBSP-WA-128



Legend

- Black Spot Program 4G Outdoor Coverage
- Black Spot Program 4G Outdoor coverage with an External Antenna
- 4GX Outdoor Coverage
- 4GX Outdoor Coverage with an External Antenna
- 4G Outdoor Coverage
- 4G Outdoor Coverage with an External Antenna

All mobile devices have been tested to operate within the coverage contours of the displayed coverage maps. Mobile device coverage depends on where you are, the device you are using and whether it has an external antenna attached. For tips on maximising your coverage, visit the [Maximise Your Coverage](#) page.

Customers should be aware that the Telstra mobile coverage maps displayed have been created using tools that predict the likely areas of coverage. Not every particular location within the identified coverage areas has been individually tested for coverage. This means that while the footprint of coverage outlined on the maps is generally accurate, there will be specific areas described as being within a coverage area where a customer's device will not work. This is a common characteristic of wireless systems. For example, coverage could be degraded or not exist in specific locations due to certain physical structures or geographic features or as a result of the device used. Physical structures which may block or inhibit coverage could include basements, lifts, underground car parks, concrete buildings, tunnels and road cuttings. Geographic features which may block or inhibit coverage could include formations such as hills and mountains or even trees.

Customers should also be aware the Telstra mobile coverage maps also may indicate planned coverage expansions of the Telstra mobile network. Coverage planned for the future is based on Telstra's rollout schedule. Telstra reserves the right to modify this schedule without notice, as required from time to time.

Data speeds experienced on Telstra's mobile networks may be affected by network availability, the type and configuration of customer equipment, the performance of external networks (for example the Internet), the signal strength of the device used and other factors such as the type of application.